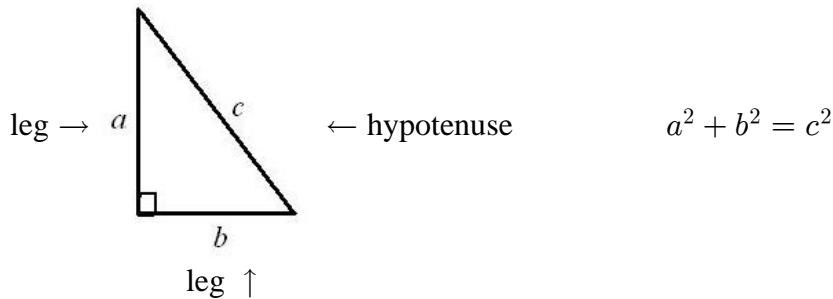


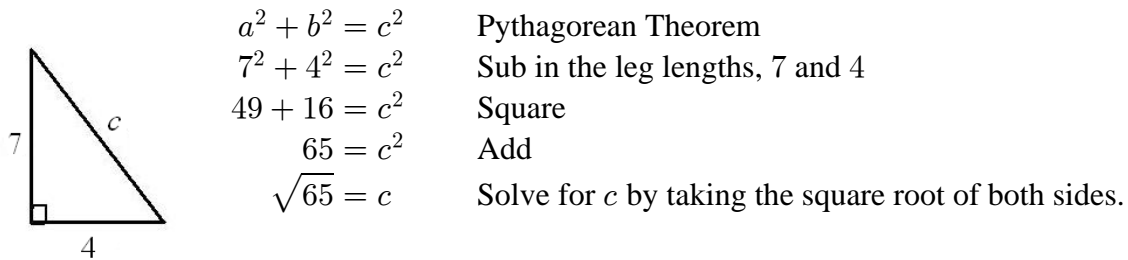
PYTHAGOREAN THEOREM



What this means is: square the lengths of each of the legs and add them together and you will get the same number as when you square the length of the hypotenuse. Don't forget the hypotenuse is always the side across from the right angle and it is the longest side. The two sides that form the right angle are called the legs of the right triangle.

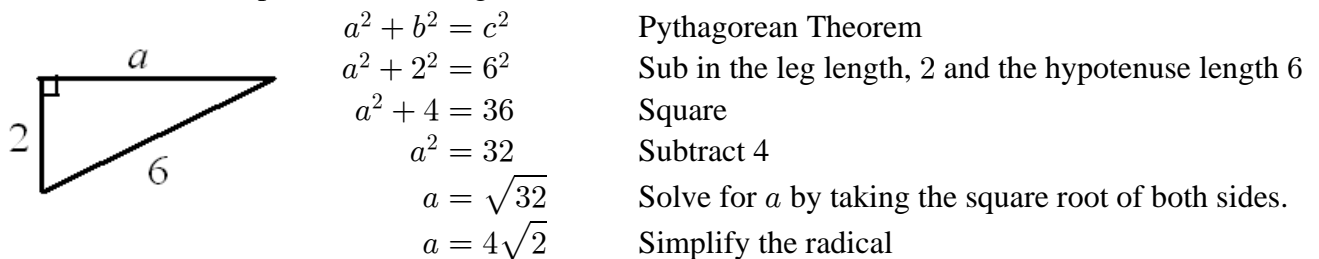
If ever you know two of the side lengths in a right triangle then the missing 3rd side can be found by using Pythagorean Theorem.

Example: Find the length of the unknown side.



Hence the length of the hypotenuse is $\sqrt{65}$.

Let's do another example. Find the length of the unknown side.



The missing leg length is $4\sqrt{2}$.